



FACILITY GUIDE

The Premier Sports & Entertainment Destination

OVERLAND PARK, KS



*Premier Sports Amenities
Family Entertainment
On-Sight Bar & Dining Options*

*Overland Park's Best
Exploring Kansas City
Getting to Us*

bluhawksports.com

16201 SHAWNEE DR, OVERLAND PARK, KS 66223

ABOUT OUR FACILITY

AdventHealth Sports Park at Bluhawk is the premier tournament destination in the Kansas City region. Our 410,000-square-foot indoor sports and entertainment complex is designed specifically to host regional competitions, national tournaments, and nationally televised events with the unique advantage of being at the center of a complete mixed-use destination.

Unlike standalone sports facilities, Bluhawk integrates world-class athletic venues with on-site dining, shopping, entertainment, and hospitality all within walking distance. Tournament directors choose us because we simplify logistics, maximize convenience, and create an unmatched experience that keeps athletes, families, and spectators engaged from arrival to departure.

PHASE 1 (OPEN NOW - 255K SF):

- NHL-regulation ice rink with 1,200-seat arena
- Eight basketball courts convertible to 16 volleyball courts
- Championship arena with 3,200 seats
- 40,000-square-foot turf field
- World-class sports performance training center with C26 Hub recovery lounge and 3-lane indoor pool
- Hawk's Outpost family entertainment center featuring 75+ arcade games, 16 bowling lanes, laser tag, esports gaming center, sports simulators, virtual reality dark ride, and roll glider

Our facility is proudly owned by Price Brothers and operated by Sports Facilities Companies.



PHASE 2 (COMING SOON - ADDITIONAL 155K SF):

Phase two will add an additional regulation sheet of ice, a smaller sheet of ice, indoor/outdoor pickleball courts, mini golf, interactive sports games, and expanded entertainment options.

VERSATILE EVENT HOSTING:

Our facility accommodates dance, cheer, basketball, volleyball, pickleball, 5v5 soccer, wrestling, gymnastics, bowling, and more. Flexible event spaces can be configured for tournaments, corporate events, concerts, conventions, and celebrations of any size.

OUR MISSION:

To be the premier sports and entertainment destination in the Kansas City Metro by providing top-notch facilities, exceptional customer service, and a memorable experience for every visitor

TOURNAMENT TEAM TIP

Pre-order your team meals for quick pick up upon arrival! Contact us 48 hours before your event to customize breakfast, lunch, dinner, or snack packages.



☎ 913.713.HAWK (4295)



ABOUT

SPORTS AMENITIES

AdventHealth Sports Park at Bluhawk features world-class facilities designed for athletes of all levels. From championship arenas to elite training centers, every element is built to support competitive excellence and tournament success.

COMPETITION VENUES:

- NHL/NCAA Ice Rink with 1,200-seat arena and 2 private suites
- Championship Arena with 3,200 seats
- 8 Basketball Courts convertible to 16 volleyball courts
- 40,000 SF Turf Field for soccer, lacrosse, flag football, and more
- 6 Team Locker Rooms with the ability to adjoin for larger teams

ATHLETE PERFORMANCE:

- Sports Performance Training Center with elite-level equipment
- C26 Hub Recovery Lounge with 3-lane indoor pool, hydrotherapy, and recovery protocols
- Professional athletic trainers available for events

TOURNAMENT-READY INFRASTRUCTURE:

- Combined spectator capacity of 4,400+ across championship arena and ice rink
- Professional streaming via NBC SportsEngine Play for all events, giving your tournament national visibility
- Flexible court configurations to accommodate multiple sports and tournament bracket formats
- Dedicated officials' locker rooms and private spaces
- On-site tournament coordination staff to support event logistics
- Electronic scoreboards and timing systems across all venues
- High-speed WiFi throughout the facility for live scoring and social media coverage

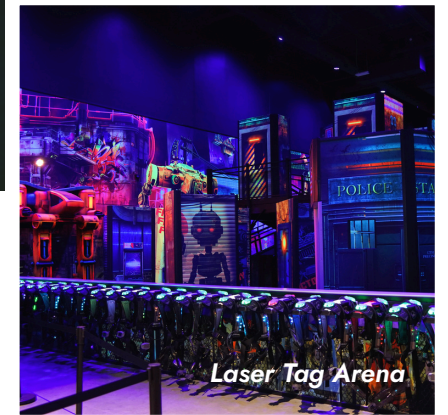
EVENTS HOSTED IN 2025

- KSHSAA 6A Boys & Girls State Wrestling Championships
- University of Kansas Hockey Club (11 Home Games)
- Kansas State University vs. University of Missouri Volleyball Exhibition
- NXT-Pro Puma Basketball Circuit
- Adidas 3ssB Gold Basketball Circuit



ALL EVENTS STREAMED ON NBC SPORTEENGINE PLAY
Give your tournament national exposure with professional streaming capabilities included with every event.

HAWKS OUTPOST



ENTERTAINMENT

Hawk's Outpost, our family entertainment center, is the ultimate destination for fun beyond the games. While athletes compete, siblings and parents can enjoy hours of entertainment without leaving the facility, maximizing convenience and creating a complete tournament experience that keeps everyone happy.

Whether you're winding down after a game or making it a day of play, Hawk's Outpost offers excitement for all ages in one action-packed space. This dynamic entertainment center features:

BOWLING:

- 10 lanes of traditional bowling
- 6 lanes of boutique Spark Bowling with enhanced lighting and music
- League play and tournament hosting available

ACTIVE ENTERTAINMENT:

- Laser Tag Arena - Multi-level tactical combat zone
- Roll Glider - Thrilling suspended coaster experience
- 4D Dark Ride - Immersive virtual reality adventure
- 2 Sports Simulators - Golf, baseball, football, hockey, and more
- 6 Krazy Darts Bays - Digital dart games and competitions

GAMING:

- 75+ Arcade Games with redemption prizes
- LEVELUP Esports Lounge - Competitive and casual gaming stations

CELEBRATIONS & EVENTS: Host an unforgettable team celebration, birthday party, or special event at AdventHealth Sports Park at Bluhawk! With on-site dining and dedicated event coordinators, planning your celebration is a breeze.

PRO TIP!

Call ahead to reserve bowling lanes, sports simulators, and Krazy Darts!

913-713-4295

FOOD & DRINK

At AdventHealth Sports Park at Bluhawk, we offer a variety of food and drink options designed to fuel performance and enhance your tournament experience. Whether you need quick fuel between games or a sit-down celebration meal, we've got you covered all without leaving the complex.

QUICK SERVICE:

- Elevate Café - Grab-n-go healthy options, sandwiches, salads, snacks, and beverages
- Downstairs Bar - Located in Hawk's Outpost entertainment center

FULL-SERVICE DINING:

- Upstairs Bar & Lounge - Overlooks both the fieldhouse and entertainment area with boutique bowling and sports simulator access
- Comprehensive menu featuring burgers, wings, pizza, salads, handhelds, appetizers, and kids' meals (see full menu on Page 6)
- In-house developed recipes beyond standard concessions fare

TEAM PRE-ORDER FOOD PACKAGES:

Streamline your tournament day and skip the lines! Coaches and team managers can order meals in advance for pickup upon arrival—ensuring your athletes are fueled and ready to compete without the wait.

AVAILABLE PACKAGES:

- Team Breakfast Packages - Hot breakfast items, fruit, juice, and coffee
- Lunch & Dinner Packages - Customizable team meals from our full menu
- Snack & Hydration Stations - Grab-n-go options for between games
- Individual Meal Vouchers - Pre-paid options for flexible team dining



HOW TO PRE-ORDER

Contact our tournament catering coordinator at least 48 hours before your event:

☎ 913.713.HAWK (4295)

TEAMCATERING@BLUHAWKSPORTS.COM



Scan to view
full menu &
allergen info



TEAM PACKAGE ORDERING

Social provisions and spirited pours. From chef-driven bites to signature cocktails, Hawks Outpost is your hub for connection and craft. Eat, drink, and stay awhile.

SHAREABLES & SIDES

Traditional Jumbo Wings (1lb) \$17

One pound of bone-in wings tossed in your choice of Buffalo, BBQ, or Garlic Parmesan.

Boneless Wings \$14

Tender breaded chicken breast pieces tossed in your choice of signature sauce.

Supreme Nachos \$12

Crisp tortilla chips topped with warm queso, fresh pico de gallo, jalapeños, and sour cream.

Add: Chicken or Pork for +\$4.00 | Guacamole for +\$2.00.

Classic Quesadilla \$12

A large flour tortilla filled with a melted cheddar-jack blend and pico de gallo, served with sour cream

Add: Chicken/Pork for +\$4.00 | Steak for +\$6.00 | Guacamole for +\$2.00

Loaded Nacho Fries \$12

Seasoned French fries smothered in warm queso, taco meat, spicy jalapeños, and cool sour cream.

Chips & Guacamole with Queso \$12

Warm, salted tortilla chips served with fresh guacamole, creamy queso, and house salsa.

Giant Pretzel \$10

An oversized, salted soft pretzel served with honey mustard and warm queso for dipping.

Mozzarella Sticks \$9

Six crispy, golden mozzarella sticks served with a side of classic marinara.

Basket of Fries or Tater Tots \$7

A large, shareable serving of our signature seasoned fries or tater tots

FRESH & HEALTHY

Southwest Chicken Salad \$14.50

Grilled chicken over mixed greens with black beans, corn, pico de gallo, and tortilla strips, served with avocado ranch dressing.

Caesar Salad \$10

Crisp romaine lettuce topped with shaved parmesan and crunchy croutons, tossed in Caesar dressing.

Add Fresh Guacamole for +\$2.00. Add Chicken for +\$4.00.

MAKE IT A WRAP!

Turkey & Swiss Wrap \$11

Thinly sliced turkey and Swiss cheese with fresh greens, wrapped for a light and portable meal.

Chicken Caesar Wrap \$11

Grilled chicken, romaine, and parmesan cheese tossed in Caesar dressing and rolled in a fresh tortilla

Spinach or Tomato tortilla +\$2.00

SUNDAY SPECIAL: THE FINAL WHISTLE (50% OFF FRESH SALADS & WRAPS AFTER 3 PM)

REAL SPORTS & ULTIMATE WINGS

Tossed In Your Favorite Sauce!

Mild
BBQ

Garlic Parm
Sweet Thai Chili

Fire Hot
Carolina Reaper

»»» 1/2 Pound \$9

»»» 1 Pound \$17

THE BEVERAGE PROGRAM

Energy Drinks \$5

A selection of energy-boosting beverages to keep you in the game.

Gatorade (20oz) \$4

Rehydrate with a variety of electrolyte-packed flavors.

Coffee / Hot Tea \$3

Freshly brewed coffee or a selection of hot teas.

Fountain Soda \$3.50 (Reg) / \$4.50 (Lrg)

Refreshing cold sodas in two sizes.

Bottled Water \$3.50

Pure hydration for athletes and spectators alike.

DRINKS



AdventHealth Sports Park
proudly serving Pepsi products!

FROM THE GRILL

Served with your choice of Seasoned Fries or Tater Tots.

Bluhawk Burger \$ 13

6oz Angus beef patty topped with cheddar cheese, fresh lettuce, tomato, red onion, and pickles on a toasted Brioche bun.

KC BBQ Burger \$ 14.50

6oz Angus beef patty piled with tender pulled pork, crispy onion rings, and cheddar cheese, smothered in signature KC BBQ sauce.

KC Grilled Cheese \$ 15

Thick-cut Texas Toast layered with sliced cheddar, pulled pork, crispy bacon strips, and creamy queso, finished with a drizzle of BBQ sauce.

Grilled Chicken Club \$ 13.50

A hearty stack of turkey, ham, and bacon with Swiss cheese, lettuce, tomato, and mayonnaise.

Crispy Chicken Sandwich \$ 12.50

Breaded chicken breast served with pickles, mayo, and lettuce on a Brioche bun (Spicy option available).

Pulled Pork Sandwich \$ 13

Slow-cooked pulled pork tossed in BBQ sauce and topped with pickle chips, served with French Fries.

Chicken Tenders Basket \$ 11

Four crispy, golden-brown tenders served with your choice of Ranch, BBQ, or Honey Mustard dipping sauce.

Add-on: \$ 2

Customize any sandwich with Fresh Guacamole.

GAMER MENU ESPORTS/ARCADE

One-handed, non-greasy, sustained energy items.

The "Focus" Wrap \$ 11

Lean turkey, fresh baby spinach, savory hummus, and crisp cucumber wrapped in a whole-wheat tortilla.

Add Fresh Guacamole for +\$2.00.

Chicken "Mana" Skewers \$ 10.50

Grilled chicken cubes seasoned with a paprika and garlic dry rub, served with a side of refreshing tzatziki.

The "Respawn" Box \$ 9

A high-protein fuel box featuring hard-boiled eggs, whole almonds, cheese cubes, and fresh grapes.

LEVEL UP

PIZZA

Hand Tossed or Flat Bread
Gluten-Free Crust Available +\$3

WHOLE 16" PIZZAS

Cheese \$ 22

Our signature blend of cheese melted over a rich marinara base.

Pepperoni \$ 24

The classic pizza topped with a generous layer of zesty pepperoni.

Meat Lovers \$ 26

A protein-rich feast featuring sausage, pepperoni, and crispy bacon.

BBQ Chicken \$ 25

Tangy BBQ sauce base topped with grilled chicken and red onions.

FLATBREAD PIZZAS

The Heavyweight \$ 13.50

A power-packed flatbread topped with lean ground beef, bell peppers, onions, marinara, and melted mozzarella.

The Defender \$ 12

A fresh basil pesto base topped with roasted tomatoes, a mozzarella blend, and a savory balsamic glaze.

The Norm (Plain) \$ 10

A classic favorite featuring our house marinara and signature cheese blend.

Add Pepperoni for +\$3.00.

THERE'S ALWAYS ROOM FOR DESSERT

Brownie & Ice Cream \$ 9

Warm fudge brownie served with a scoop of vanilla ice cream.

Birthday Cake Balls \$ 8

Birthday cake rolled into balls, topped with powdered sugar, and served with raspberry or strawberry sauce.

Cheesecake Rolls \$ 8

The Bluhawk version of a cannoli! Topped with powdered sugar and served with raspberry or chocolate, drizzled on top!

CRAFT COCKTAILS

Handcrafted with fresh juices and premium spirits.

Maple Old Fashioned

Elijah Craig Small Batch bourbon combined with rich maple syrup and Angostura bitters, finished with a signature smoke infusion.

Espresso Martini

A sophisticated blend of Van Gogh Double Espresso Vodka and Kahlúa shaken with fresh-brewed espresso.

The Royal 75

Empress 1908 Gin, Lemon, Simple, Sparkling Wine.

The Boulevardier

Bulleit Bourbon, Campari, Sweet Vermouth.

\$ 15

\$ 15

\$ 14

\$ 14

Cucumber Caliente

21 Seeds Cucumber Jalapeño Tequila, Lime, Agave, Tajin.

\$ 13

The Kentucky Mule

Buffalo Trace Bourbon, Lime, Ginger Beer, Mint.

\$ 13

Painkiller

Pusser's Rum, Pineapple, Orange, Coconut, Nutmeg.

\$ 13

Ruby Red Crush

Deep Eddy Ruby Red, Fresh Grapefruit, Soda.

\$ 12

WHISKEY & SCOTCH FLIGHTS

3oz total pour (1oz per selection). Pricing reflects premium allocations.

The "Hunter's" Allocation

A rotating selection of rare finds: Buffalo Trace, Eagle Rare 10 Year, and Blanton's Original Single Barrel.

\$ 28

Small Batch Select

A flight showcasing complex profiles: Basil Hayden, Four Roses Small Batch, and Woodford Reserve.

\$ 22

Tour of Scotland

Explore regional distinctiveness: Monkey Shoulder, Glenfiddich 14yr, and Oban 14yr.

\$ 24

The Executive

Our ultra-premium tier: Balvenie 14yr Caribbean Cask, Johnnie Walker Blue Label, and Macallan 18yr.

\$ 65

UNCORK & UNWIND

HAVE A GLASS OF

WINE

Reds

19 Crimes - Red Blend	\$10 \$35
Castle Rock - Pinot Noir	\$10 \$35
Decoy - Cabernet Sauvignon	\$14 \$45
Coppola - Merlot	\$12 \$40
Dark Horse - Rosé	\$10 \$29

Whites

Josh Pinot Grigio	\$12 \$39
Kendall-Jackson Chardonnay	\$12 \$39
Kim Crawford Sauvignon Blanc	\$13 \$39
Chateau Ste. Michelle Riesling	\$11 \$37
La Marca Prosecco	\$10 \$29

ALL
YOUR FAVORITES
EVERYDAY AT BLUHAWK

ZERO PROOF MOCKTAIL

Sophisticated hydration for athletes and families.

The "Bluhawk" Signature \$ 8

Rosemary Blueberry Smash with lemon and honey.

The "Recovery" \$ 8

Cucumber, mint, and lime with sparkling water.

The Crowd Pleaser \$ 8

Strawberry Basil Lemonade with crisp soda.

The Post-Game Treat \$ 9

Virgin Painkiller with pineapple and coconut.

The Hydration Station \$ 9

Watermelon Mint Agua Fresca with lime and agave.

Margarita Monday \$ 8

House Classic Margaritas.

Tito's Tuesday \$ 9

Tito's Handmade Vodka Highballs.

The Hump Day Burger \$ 14

Buhawk Burger with Domestic Beer

Thirsty Thursday \$ 8

Deep Eddy Lemon Drop Martinis.

Feature Friday \$ 13

Empress Gin Specials

Spritz Saturday \$ 10

Classic Aperol Spritz.

Sunday Funday \$ 9

"Recovery" Bloody Marys.

WEEKLY SPECIALS

UNCORK & UNWIND HAVE A GLASS OF

WINE

THERE'S ALWAYS ROOM FOR DESSERT

Brownie & Ice Cream \$ 9

Warm fudge brownie served with a scoop of vanilla ice cream.

Birthday Cake Balls \$ 8

Birthday cake rolled into balls, topped with powdered sugar, and served with raspberry or strawberry sauce.

Cheesecake Rolls \$ 8

The Bluhawk version of a cannoli! Topped with powdered sugar and served with raspberry or chocolate drizzled on top!

BEER & SELTZERS

SCORE!

YOUR FAVORITE TODAY

Ask about our seasonal beverages! Prices vary.

Domestic Beer \$6.00 (Bucket \$25)

*Bud Light
Busch Light
Coors Light
Miller Light
Yuengling Lager
Yuengling Flight
PBR*

Import Beer \$7.00 (Bucket \$30)

*Labatt Blue
Guinness
Corona Extra
Corona Light
Boulevard Wheat
Modelo Especial
Heineken*

Craft & Seltzers \$8.00 (Bucket \$35)

*Quirk Seltzer NA
Michelob Ultra Zero
White Claw
High Noon
Fling
NUTRL*

IPAs

*Space Camper
Boulevard Pale Ale
Boulevard Wheat
Martin City Hardway*



AdventHealth Sports Park
proudly serving Pepsi products!

WEEKEND DINING

FUEL CHAMPIONSHIP PERFORMANCE

Athletes perform their best when properly fueled. AdventHealth Sports Park at Bluhawk offers convenient, nutritious options designed specifically for tournament schedules and athletic performance needs.

ELEVATE CAFÉ - GRAB-N-GO ESSENTIALS

Located inside the sports complex for maximum convenience:

- Protein-packed meals - Grilled chicken, turkey wraps, power bowls
- Fresh salads & fruit - Nutrient-dense, energy-sustaining options
- Smoothies & juices - Quick hydration and recovery
- Healthy snacks - Granola bars, trail mix, yogurt parfaits, fresh fruit
- Hydration station - Water, sports drinks, electrolyte beverages
- Chick-Fil-A on weekends

WEEKEND TOURNAMENT PARTNERS

We partner with trusted national brands to provide additional familiar options for traveling families:

- Chick-fil-A - Fast, quality meals athletes and families love
- Smoothie King - Performance smoothies and nutritional supplements



⚡ ATHLETE NUTRITION TIP

Eat 2-3 hours before competition. Focus on complex carbohydrates, lean protein, and hydration. Save heavy or unfamiliar foods for after your event.

Venue	Saturday	Sunday
Elevate Cafe	7 AM-9 PM	7 AM-8 PM
Full Service Bar & Grill	11 AM-10 PM	11 AM-9 PM

FACILITY GUIDELINES

WELCOME TO ADVENTHEALTH SPORTS PARK AT BLUHAWK

To ensure a safe, enjoyable experience for all tournament participants, spectators, and families, please review these facility guidelines. We appreciate your cooperation in maintaining a world-class environment for everyone.

IMPORTANT POLICIES

- **No Outside Food or Beverage** - Diverse dining options available on-site
- **Cashless Facility** - All transactions via credit/debit card or mobile payment
- **No Coolers, Ice Chests, or Folding Chairs** - Seating provided in all competition venues
- **Bag Checks** - All bags subject to inspection upon entry for safety
- **Parking Guidelines** - Please adhere to all posted signage for everyone's convenience

WHAT YOU CAN BRING

- ✓ Personal water bottles (empty upon entry; fill at our hydration stations)
- ✓ Team banners and signs (appropriate, non-profane content)
- ✓ Cameras and mobile devices (for personal use; media credentials required for commercial filming)
- ✓ Blankets and cushioned seat pads (for added comfort in bleachers)
- ✓ Strollers and mobility devices (accessible entry and seating available)

QUESTIONS?

Our guest services team is here to help.

📞 913.713.HAWK (4295)

🌐 [BLUHAWKSPORTS.COM](https://bluhawksports.com)

PROHIBITED ITEMS

For the safety and comfort of all guests, the following items are not permitted:

- ✗ Outside food, beverages, or alcohol
- ✗ Coolers, ice chests, or folding chairs
- ✗ Weapons, firearms, pepper spray, pocket knives, or mace
- ✗ Illegal drugs or controlled substances
- ✗ Flammable liquids, aerosol cans, or permanent markers
- ✗ Flashlights, laser pointers, light/glow sticks, or flares
- ✗ Fireworks or explosive materials
- ✗ Noise-making devices (air horns, whistles, bells, cowbells, etc.)
- ✗ Balloons, projectiles, or optical illusion devices
- ✗ Skateboards, Segways, scooters, rollerblades, bicycles, hoverboards
- ✗ Entry without shoes or shirt
- ✗ Drones (without prior written consent from facility management)
- ✗ Unapproved pamphlets, handouts, advertisements, or flyers (without facility management consent)
- ✗ Clothing displaying explicit language, profanity, or derogatory content toward any person(s)

★ You Are Here

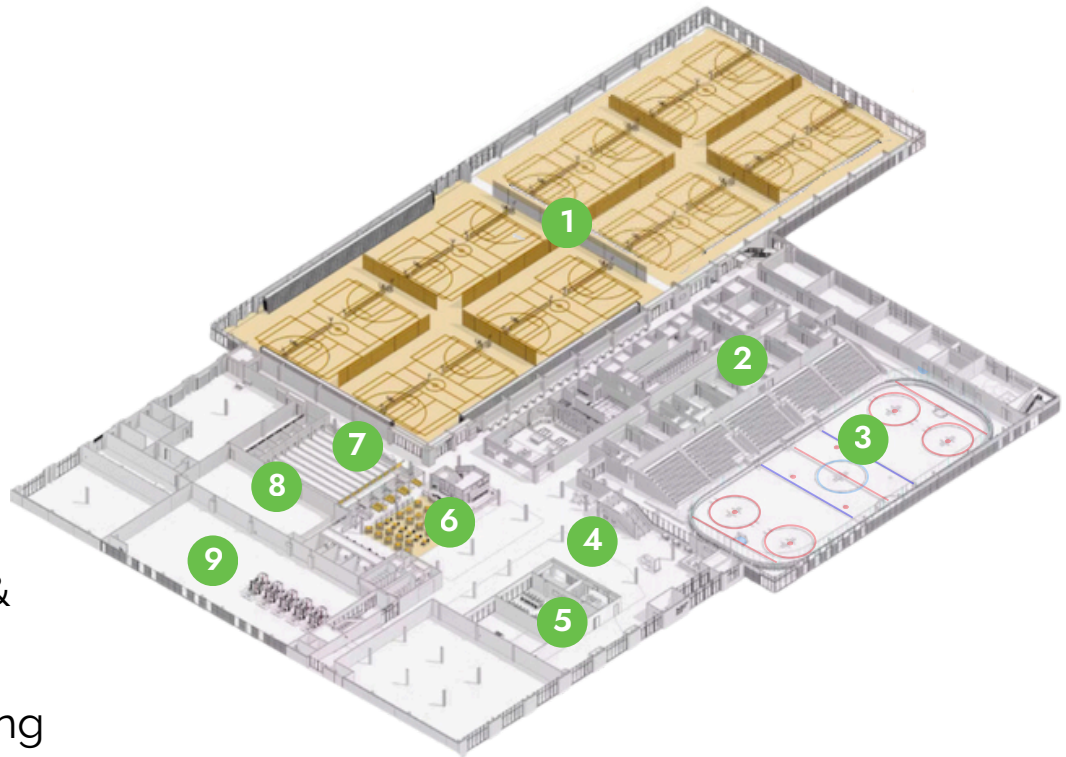


Advent Health
SPORTS PARK
at BLUHAWK

UPPER
LEVEL



1. Mixed Use Courts
2. Locker Rooms
3. Ice Rink
4. Arcade & Sports Simulators
5. E-Sports Lounge
6. Grab-n-Go Café & Bar
7. Main Level Bowling
8. Laser Tag
9. Sports Performance



VISITOR PARKING MAP



Parking:

- P1: Main Sports Park Parking (closest to all competition venues)
- P2: Retail & Dining Parking (shared for shopping/restaurants)
- P3: Overflow Event Parking (large tournament weekends)

Lodging:

- Holiday Inn Express & Suites - Steps from Sports Park entrance
- 1,000+ additional hotel rooms within 15 minutes
- Currently Opened Dining/Shopping area (show on map)

PHASE 2 (SPRING 2027):

- 160,000 SF elevated retail, dining, services & entertainment

Healthcare:

- AdventHealth South Overland Park (24/7 ER)

EXPLORE MORE

Scan the QR code to access our full directory of shopping options.





Phase 2 Rendering

BLUHAWK: YOUR TOURNAMENT HOME BASE

THE CENTER OF SPORT & LIFESTYLE

Bluhawk is designed to be your one-stop destination for the ultimate tournament experience. Everything you need is right here: world-class sports facilities, comfortable accommodations, diverse dining, and premium shopping—all within walking distance.

Why Stay at Bluhawk?

Our integrated district keeps teams and families together, maximizing convenience and minimizing travel time. Between games, enjoy a meal at one of our restaurants, explore our retail shops, or let the kids burn off energy at Hawk's Outpost. When the tournament ends, the experience continues.

As The Center of Sport + Lifestyle, Bluhawk seamlessly blends athletic competition with everyday amenities, creating a destination where tournament weekends transform into memorable experiences for the entire family. No other sports facility in the region offers this level of convenience and integration.

COMING SOON: PHASE 2

Set to open in Spring 2027, Phase 2 will deliver 160,000 square feet of elevated lifestyle retail, dining, services and entertainment. This crafted experience will feature curated shopping, premium dining options, and inviting green spaces that create even more reasons to stay, shop, dine, and celebrate at Bluhawk.

EXPLORE IT ALL HERE



OPEN NOW

DINING

- AdventHealth Sports Park (full-service bar & grill, Elevate Café)
- Cactus Grill
- Costa Vida
- Freddy's
- Gyu-Kaku Japanese BBQ
- Jinya Ramen Bar
- Nectar Juice Bar
- Of Course KC
- Red Door Grill
- SaladWorks
- Swig
- Whataburger

RETAIL

- Barnes & Noble
- Bath & Body Works
- J. Crew
- Sierra
- TJ Maxx
- Ulta

STAY WITH US: HOLIDAY INN EXPRESS & SUITES OVERLAND PARK SOUTH

NEWEST MODERN HOTEL IN SOUTH OVERLAND PARK

The Holiday Inn Express & Suites Overland Park South is your perfect tournament headquarters, located steps from AdventHealth Sports Park at Bluhawk. Our brand-new, pet-friendly hotel offers everything teams and families need for a comfortable and convenient stay.

Prime Location:

- Walking distance to AdventHealth Sports Park, premium dining, shopping, and entertainment at Bluhawk
- Less than 5 miles from Scheels Overland Park Soccer Complex, Blue Valley Recreation Sports Complex, Heritage Park, and Southcreek Office Park
- Easy highway access to Kansas City attractions, Arrowhead and Kauffman Stadiums, and Kansas City International Airport (30 minutes)

Amenities Designed for Tournament Teams:

- Spacious, contemporary guest rooms and suites
- 55" Smart HDTVs with streaming capability
- Microwaves and refrigerators in every room
- Complimentary daily hot breakfast
- Free Wi-Fi throughout the property
- Business center
- Fitness center
- Heated indoor pool
- Guest laundry facilities
- On-site marketplace
- Meeting room for team gatherings

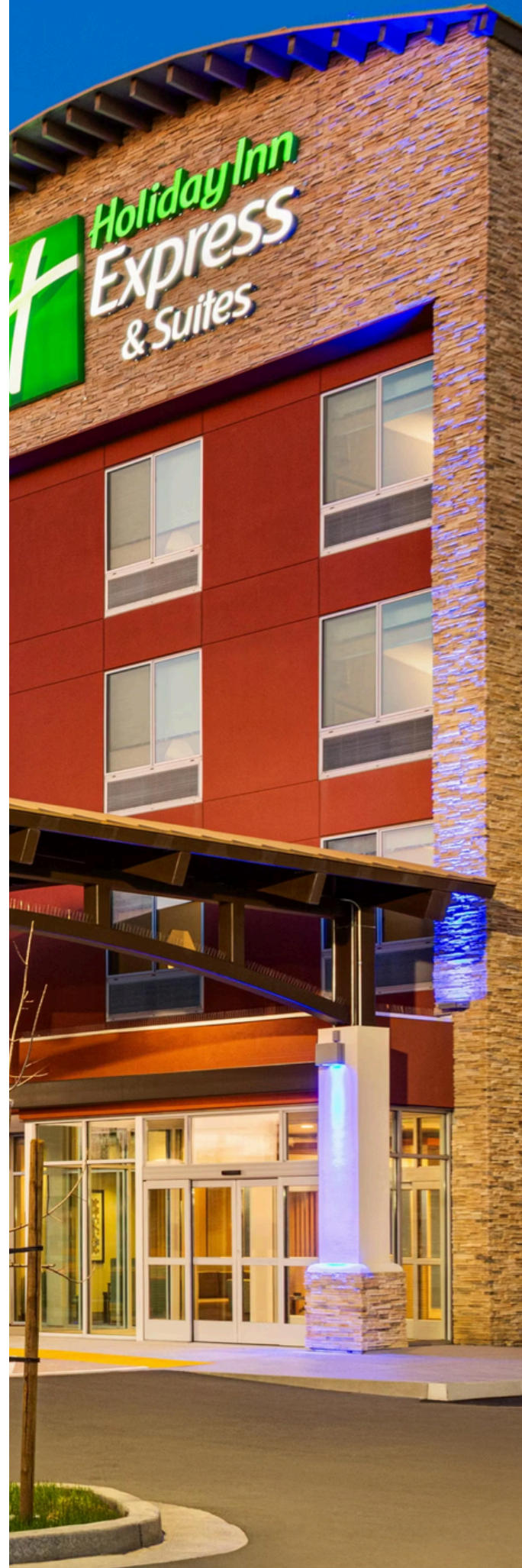
BOOK YOUR ROOM BLOCK

Scan code to reserve rooms, view availability or request team block pricing



Additional Area Hotels:

Over 1,000 hotel rooms are available within 15 minutes of AdventHealth Sports Park at Bluhawk, offering a variety of options to suit every budget





KANSAS CITY

ABOUT THE REGION:

Located just 30 minutes from Kansas City International Airport and 20 minutes from downtown Kansas City, Bluhawk offers the perfect home base for tournament families. While the Kansas City metro is home to professional sports teams, world-class museums, and vibrant entertainment districts, everything you need for an exceptional tournament experience is right here at Bluhawk with no extra driving required.

THINGS TO DO

Kansas City is a vibrant metropolitan hub known for its rich culture, world-famous barbecue, and deep roots in jazz and sports. Spanning both Kansas and Missouri, the city offers a unique blend of Midwest charm and urban energy.

Professional Sports Teams

- Kansas City Chiefs (NFL)
- Kansas City Royals (MLB)
- Sporting Kansas City (MLS)
- Kansas City Current (NWSL)
- Kansas City Mavericks (ECHL)

Attractions

- Worlds of Fun
- Oceans of Fun
- National WWI Museum and Memorial

Shopping & Dining Districts

- Bluhawk
- Country Club Plaza
- Crossroads
- Crown Center
- Downtown Kansas City
- Prairie Fire
- Town Center
- Westport

CONTACT US



ADDRESS:

16201 SHAWNEE DRIVE
OVERLAND PARK, KS 66223

PHONE: 913.713.HAWK (4295)

EMAIL: INFO@BLUHAWKSPORTS.COM

WEBSITE: BLUHAWKSPORTS.COM

FOLLOW US:

STAY CONNECTED FOR THE LATEST EVENTS, PROMOTIONS, AND TOURNAMENT UPDATES.

FACEBOOK | INSTAGRAM: @BLUHAWKSPORTS

FACEBOOK | INSTAGRAM: @BLUHAWKCC

Venue	Hours
Sports Park	Varies by Event Schedule
Hawk's Outpost	Mon-Thu: 3 PM-9 PM Fri: 3 PM-11 PM Sat: 10 AM-11 PM Sun: 12 PM-8 PM
Elevate Cafe	Mon-Fri: 7 AM-8 PM Sat-Sun: Tournament hours
Bar & Grill	Daily: 11 AM-10 PM

HOURS SUBJECT TO CHANGE. VISIT BLUHAWKSPORTS.COM FOR CURRENT INFORMATION.

WE LOOK FORWARD TO HOSTING YOUR TEAM!



BLUHAWK

The Center of Sport + Lifestyle